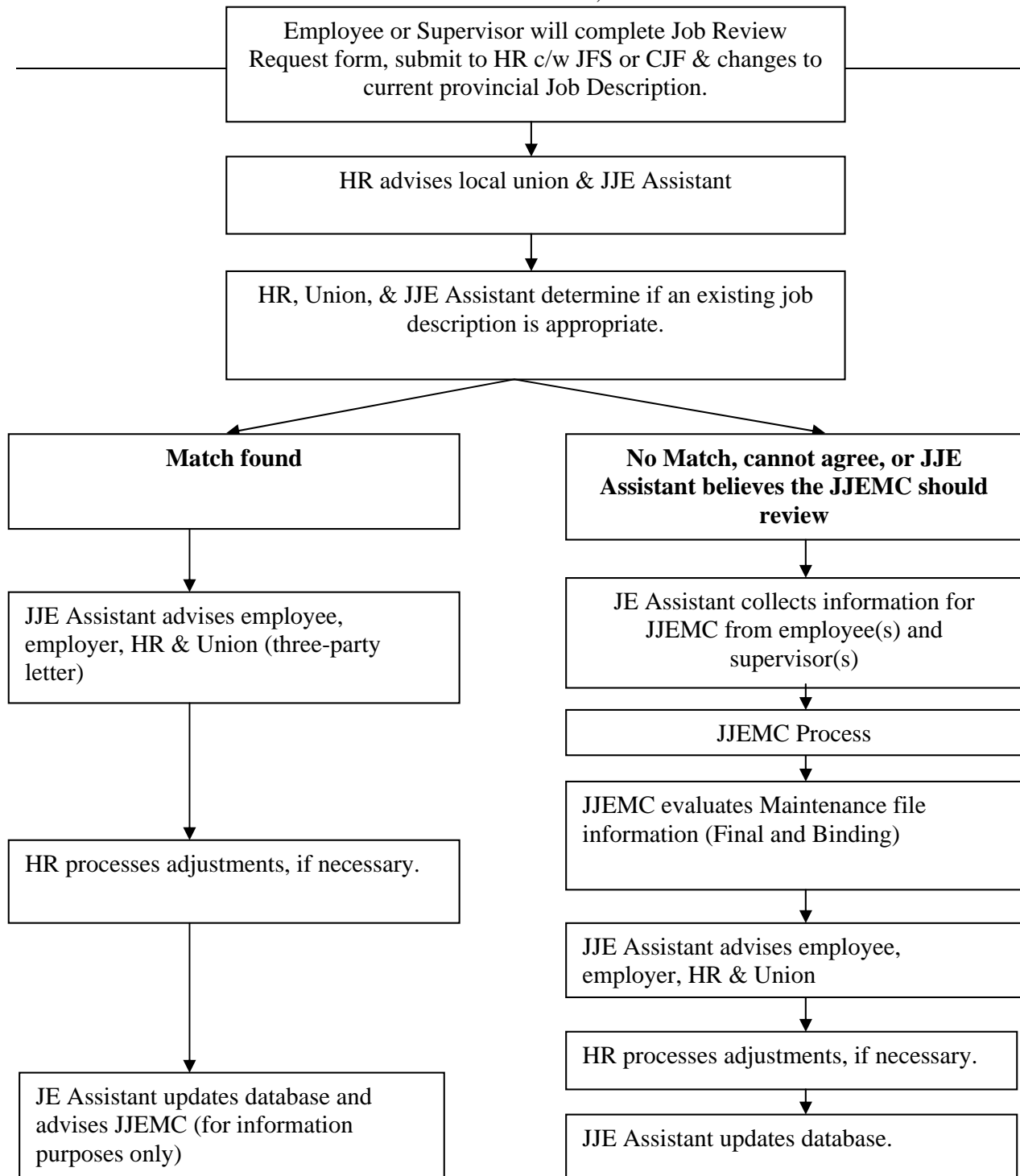


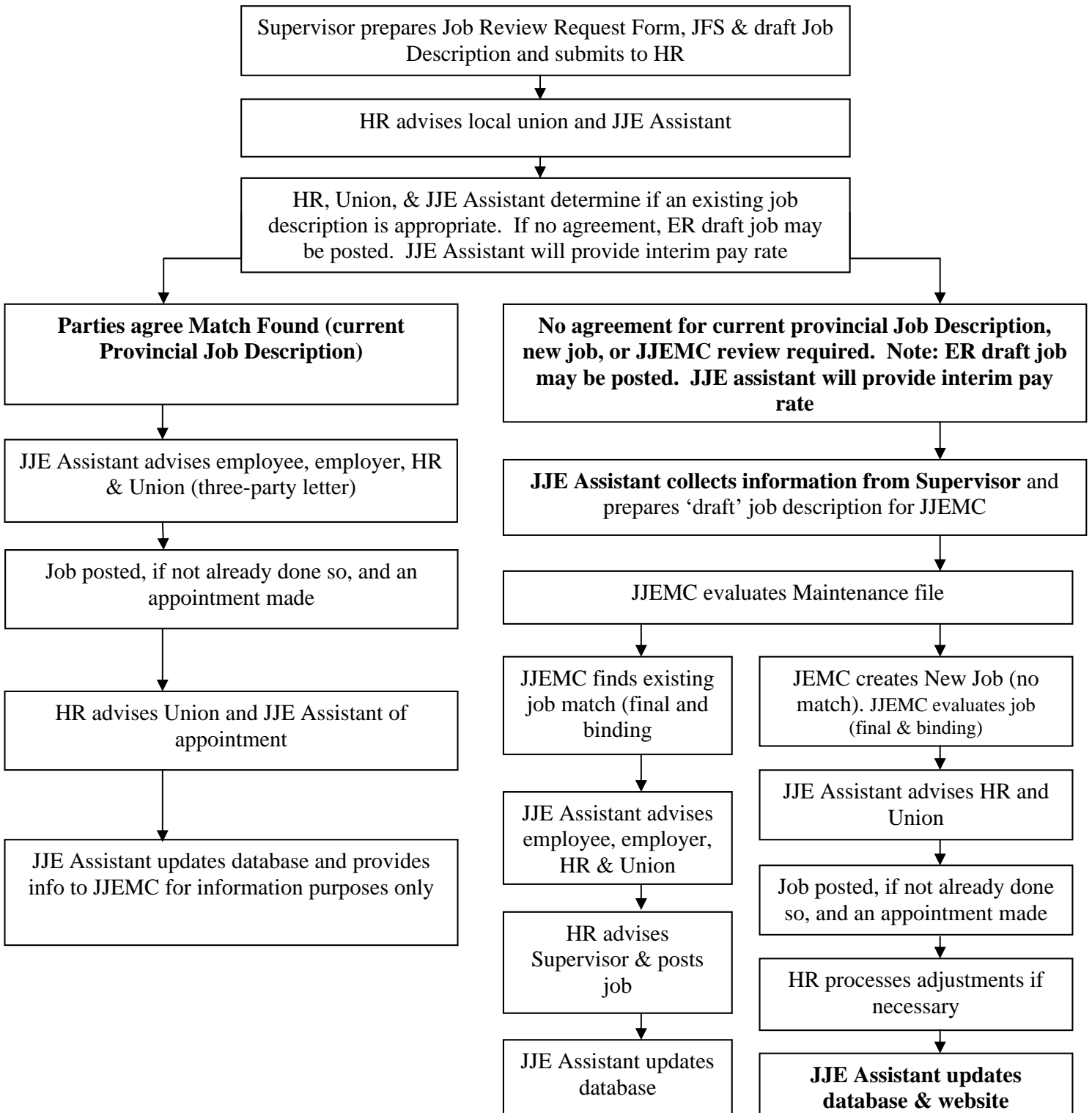
**Maintenance Procedure  
Changed Job (Reclassification)**

Revised October 25, 2010



Note: The JJEMC decision is final and binding. Any subsequent submission of information will constitute a new maintenance request.

**Maintenance Procedure  
New Job  
Revised October 25, 2010**



Note: The JJEMC decision is final & binding. Any subsequent submission of information will constitute a new maintenance request.